



Remote Residential Control

## X-Pulse System Overview

### System overview

The BLP X-Pulse™ is a complete remote disconnect system that provides Utilities with a Wholehouse residential disconnect capability, eliminating costly and potentially hazardous site visits by meter personnel. Control of the field devices is via the commercial paging network using the Flex® protocol. This means a rapid & cost effective implementation of an X-Pulse system can be achieved without the investment and maintenance requirements associated with dedicated communications systems.

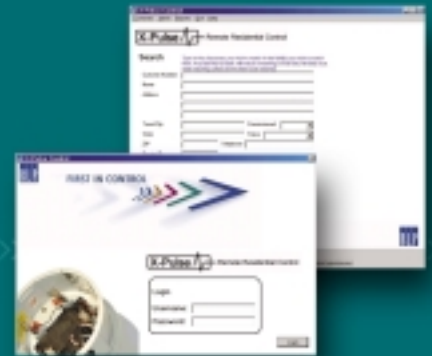
Using the X-Pulse remote control software a utility can individually contact any of the field units and perform a disconnection or reconnection, remotely.

The software contains a customer database which holds details of all the field units including their location and switch status. The utility can search for a customer using multiple user defined and standard fields then, once a customer has been located and identification confirmed, an instruction can be sent to the X-Pulse unit. The software generates the appropriate coded message and sends it to the designated paging service provider via the PC modem. The message is then transmitted over the paging network using the flex protocol to the X-Pulse unit for decoding and action.

### Key Features

- > Operates on a stand-alone PC
- > Existing customer database can be imported in cvs format
- > Intuitive user interface
- > Flexible grouping feature for load shedding applications
- > High level of security through separate user and administration areas
- > Over the air commissioning and programming
- > Generate reports showing history of activity

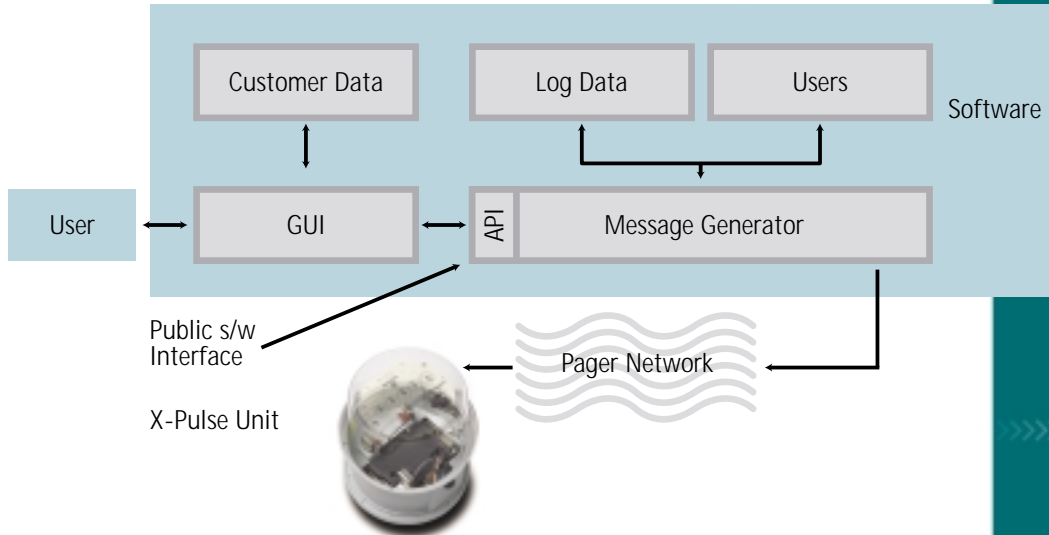
see more at [www.blpx-pulse.com](http://www.blpx-pulse.com)



### Why X-Pulse

- > Eliminate disconnect and reconnect costs
- > No investment in communications infrastructure
- > Simple 'Plug-in' installation
- > Cost effective for both small and large scale deployments
- > Operates from a desktop PC

## System components



## System commands

<p><b>Customers</b></p> <p>SEARCH IMPORT ADD CUSTOMER SCREEN</p>	<p>Search for customer.</p> <p>Import customer database csv file.</p> <p>Create new customer record.</p> <p>Check a customer's information and status, commission the unit, print a commission report, edit the customer information, send a message to the commissioned unit.</p>
--	--

<p><b>Admin</b></p> <p>QUEUE USERS CHANGE PASSWORD CONFIGURE</p>	<p>Connecting/disconnecting multiple customers.</p> <p>Add users, update user status.</p> <p>Change system parameters, user defined field, pin number and current limit.</p>
--	--

<p><b>Reports</b></p> <p>LOG QUIT LOGOUT EXIT</p>	<p>Displays a report showing the history of activity on a customer.</p> <p>Logs off user but leaves system active.</p> <p>Allows the user to shut the system down.</p>
---	--

## System requirements

- > Intel Pentium processor
- > Windows 95, 98, ME or 2000
- > 64MB Ram
- > PC Modem 56Kbps recommended
- > Analog telephone line



### North & South America

1501 Route 34 South  
Farmingdale  
NJ 07727  
USA  
Tel: +1 (732) 751-5851  
Fax: +1 (732) 751-5779

website: [www.blpcomp.com](http://www.blpcomp.com)

### Europe, Asia Pacific & Africa

BLP Components Ltd.,  
Exning Road,  
Newmarket, Suffolk.  
CB8 0AX England.  
Tel: +44 (0) 1638 665161  
Fax: +44 (0) 1638 660718

e-mail: [sales@blpcomp.com](mailto:sales@blpcomp.com)