

LED Traffic Signal

Series 438 230Vac

Scandinavia

200mm



View of signal when off

- **High efficiencies as a result of the new High Flux Reflector Technology and Central Light Source**
- **No colour phantom when fitted with the blackened (smoked effect) lens**
- **Unrivalled reading contrast**

Dialight Garufo GmbH
Gewerbepark Spörrerau 25, 85368 Wang, Deutschland
Tel.: +49(0)8709/9249-0 Fax: +49(0)8709/9249-10
Email: sales@dialightgarufo.com
Internet: www.dialightgarufo.com

Optical advantages and characteristics

	Typical Data	Standard	Definition
Luminous Intensity Red Yellow Green	350cd 350cd 350cd	EN 12368, 6.3, Tab. 1	B 2/1 Type W
Light Distribution	Wide Angle	EN 12368, 6.4, Tab. 3	Type W, category B
Uniformity	Minimum 1:2,2	EN 12368, 6.5	>1:10
Phantom Light	No colour phantom (black lens)	EN 12368, 6.6	No wrong signal possible from direct sunlight
Ratio signal light / reflection	Red >16 Yellow >16 Green >16	EN 12368, 6.6	class 5 class 5 class 5
Light colours	Red, Yellow, Green, White	EN12368, 6.7 DIN 6163, Part 5	

measured at room temperature

Electrical characteristics: Preliminary

	Typical power consumption	Current at 230Vac
Red	14 Watt	65mA
Yellow	14 Watt	65mA
Green	14 Watt	65mA
White	14 Watt	65mA

measured at room temperature

Ambient Conditions

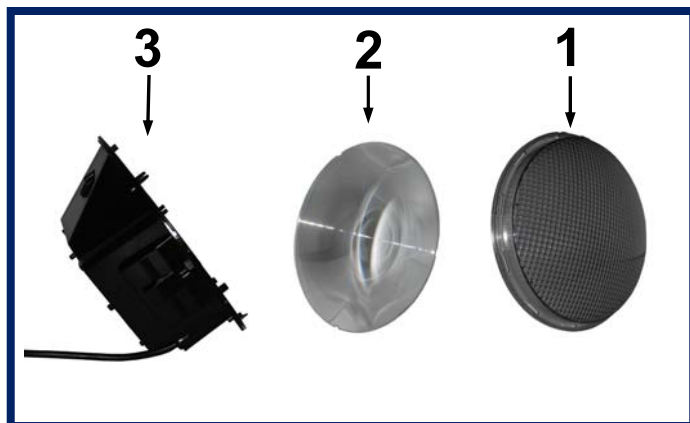
Storage temperature	-20°C to +60°C
Storage relative humidity	Maximum 70%
Operating temperature	-40°C to +60°C

Part Numbers

	Black Outer Lens	Coloured Outer Lens
Red	143917	TBC
Amber	143918	TBC
Green	143919	TBC
White	143920	N/A

Dialight Garufo GmbH
 Gewerbepark Spörerau 25, 85368 Wang, Deutschland
 Tel.: +49(0)8709/9249-0 Fax: +49(0)8709/9249-10
 Email: sales@dialightgarufo.com
 Internet: www.dialightgarufo.com

Composition

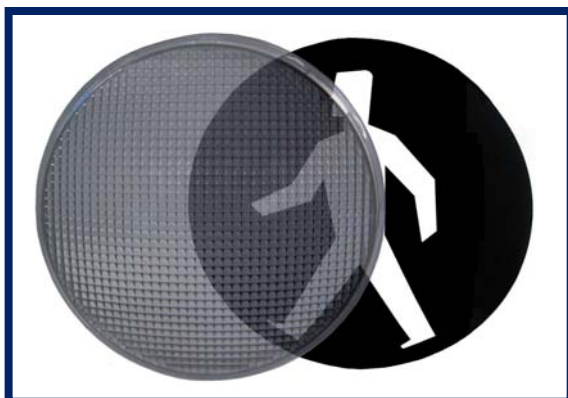


- 1. Front lens material:**
Polycarbonate.
(Black and colour dye lens available)
- 2. Fresnel lens material:**
Clear Acrylic
- 3. Base housing material:**
Polycarbonate

Symbols

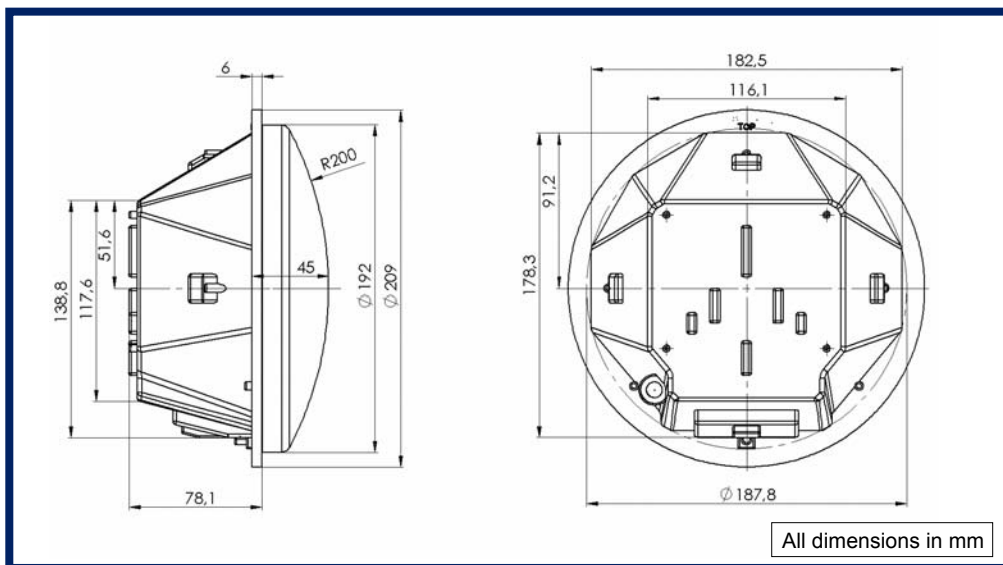
Flexible symbol design

Standard or customised symbol designs can be supplied on laser-cut, polycarbonate masks. The mask is mounted inside the outer lens or supplied separately. The outer lens can be supplied in a 'semi-locked' condition to allow the mask to be swapped or removed before the lens is finally locked into position and installed.



Dialight Garufo GmbH
Gewerbepark Spörerau 25, 85368 Wang, Deutschland
Tel.: +49(0)8709/9249-0 Fax: +49(0)8709/9249-10
Email: sales@dialightgarufo.com
Internet: www.dialightgarufo.com

Dimensions



Dialight Garufo GmbH
Gewerbepark Spörrerau 25, 85368 Wang, Deutschland
Tel.: +49(0)8709/9249-0 Fax: +49(0)8709/9249-10
Email: sales@dialightgarufo.com
Internet: www.dialightgarufo.com