

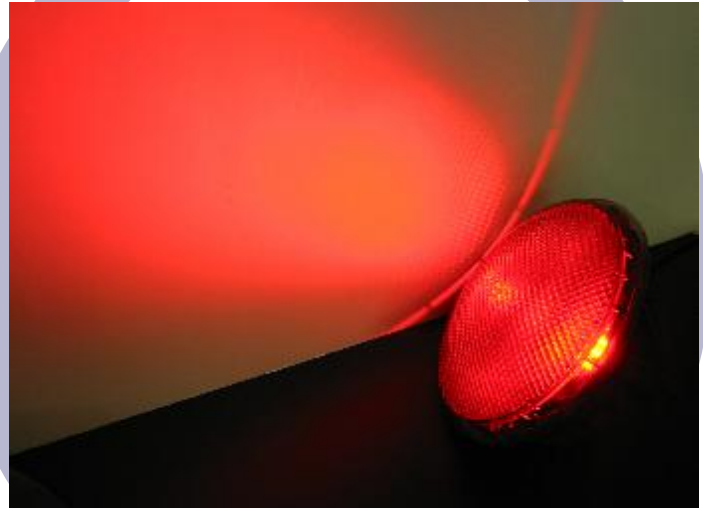
LED Traffic Signal

Series 438 24Vac

200 mm / 300 mm

Very Low Power Consumption

EU5+ (ac type)



- **Designed for very low ac applications**
- **High efficiencies as a result of the new High Flux Reflector Technology and Central Light Source**
- **No Colour Phantom when fitted with the blackened (smoked effect) lens**
- **Unrivalled reading contrast**

Dialight Garufo GmbH
Gewerbepark Spörerau 25, 85368 Wang, Deutschland
Tel.: +49(0)8709/9249-0 Fax: +49(0)8709/9249-10
Email: sales@dialightgarufo.com
Internet: www.dialightgarufo.com

Optical advantages and characteristics

	Typical Data		Standard		Definition	
	200 mm	300 mm	200 mm	300 mm	200 mm	300 mm
Luminous Intensity Red Yellow Green	350 cd 350 cd 350 cd	400 cd 400 cd 400 cd	EN 12368, 6.3, Tab. 1		B 2/1 Type W	B3/1 Type N
Light distribution	Wide angle	Narrow angle	EN 12368, 6.4, Tab. 3	EN 12368, 6.4, Tab. 5	Type W, category B	Type N, category B
Uniformity	minimum 1: 2,2	minimum 1: 2,4	EN 12368, 6.5		>1:10	>1:15
Phantom light	No colour phantom (black lens)		EN 12368, 6.6		No 'false' signal in direct sunlight	
Ratio signal light / reflection	Red > 16 Yellow > 16 Green > 16	Red > 16 Yellow > 8 Green > 16	EN 12368, 6.6		class 5 class 5 class 5	class 5 class 4 class 5
Light colours	Red, Yellow, Green, White		EN 12368, 6.7 DIN 6163, Part 5			

Data based on the black outer lens type

measured at room temperature

Electrical characteristics

	Typical power consumption	Current
	24 VAC	24 VAC
Red	4.0 Watt	320 mA
Yellow	5.5 Watt	400 mA
Green	4.5 Watt	360 mA
White	4.5 Watt	360 mA

measured at room temperature. Input Voltage range 19VAC to 29VAC

Ambient Conditions

Storage temperature	-20°C to +60°C
Storage relative humidity	Max. 70%
Operating temperature	-40°C to +60°C

Part Numbers

	Blackened outer lens	Coloured outer lens
200mm	Red 144216	N/A
	Amber 144217	N/A
	Green 144218	N/A
	White 144219	N/A
300mm	Red 144220	N/A
	Amber 144221	N/A
	Green 144222	N/A
	White 144223	N/A

Dialight Garufo GmbH
 Gewerbepark Spörrerau 25, 85368 Wang, Deutschland
 Tel.: +49(0)8709/9249-0 Fax: +49(0)8709/9249-10
 Email: sales@dialightgarufo.com
 Internet: www.dialightgarufo.com

Composition

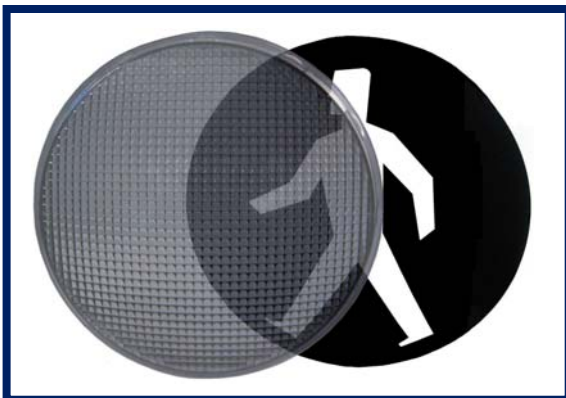


- 1. Front lens material:**
Polycarbonate.
(Black and colour dye lens available)
- 2. Fresnel lens material:**
Clear Acrylic
- 3. Base housing material:**
Polycarbonate

Symbols

Flexible symbol design

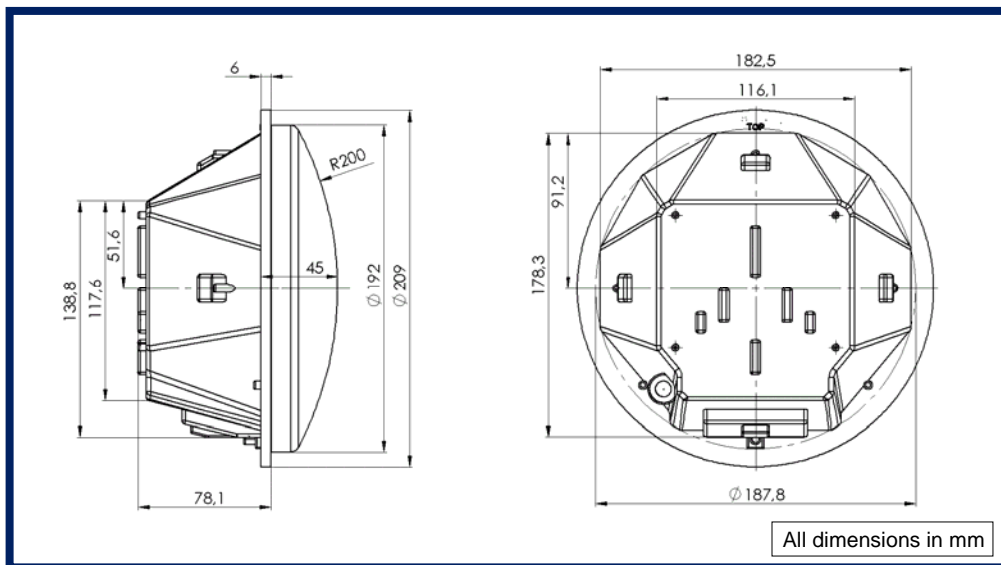
Standard or customised symbol designs can be supplied on laser-cut, polycarbonate masks. The mask is mounted inside the outer lens or supplied separately. The outer lens can be supplied in a 'semi-locked' condition to allow the mask to be swapped or removed before the lens is finally locked in position and installed.



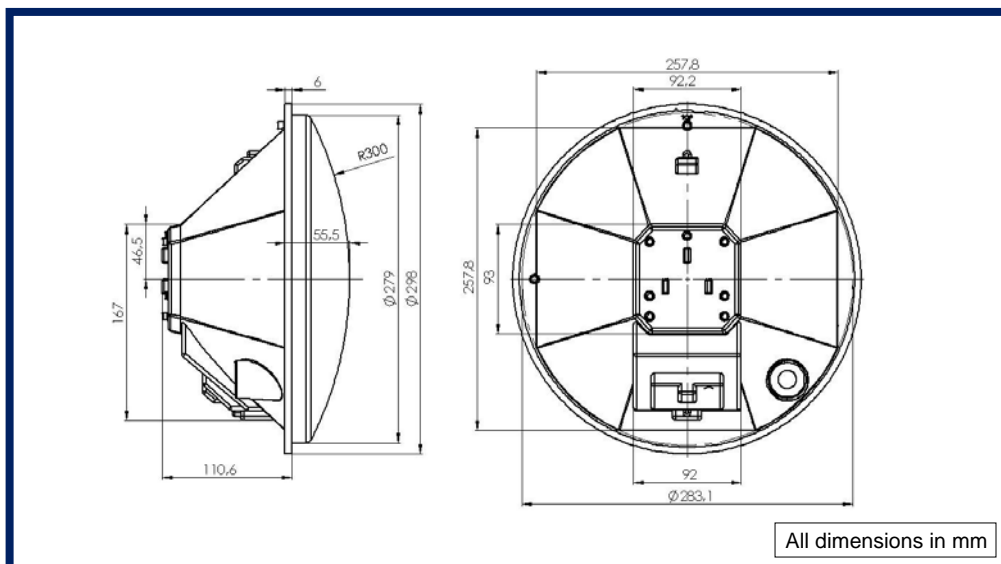
Dialight Garufo GmbH
Gewerbepark Spörerau 25, 85368 Wang, Deutschland
Tel.: +49(0)8709/9249-0 Fax: +49(0)8709/9249-10
Email: sales@dialightgarufo.com
Internet: www.dialightgarufo.com

Dimensions

200mm



300mm



Dialight Garufo GmbH
Gewerbepark Spörrau 25, 85368 Wang, Deutschland
Tel.: +49(0)8709/9249-0 Fax: +49(0)8709/9249-10
Email: sales@dialightgarufo.com
Internet: www.dialightgarufo.com